

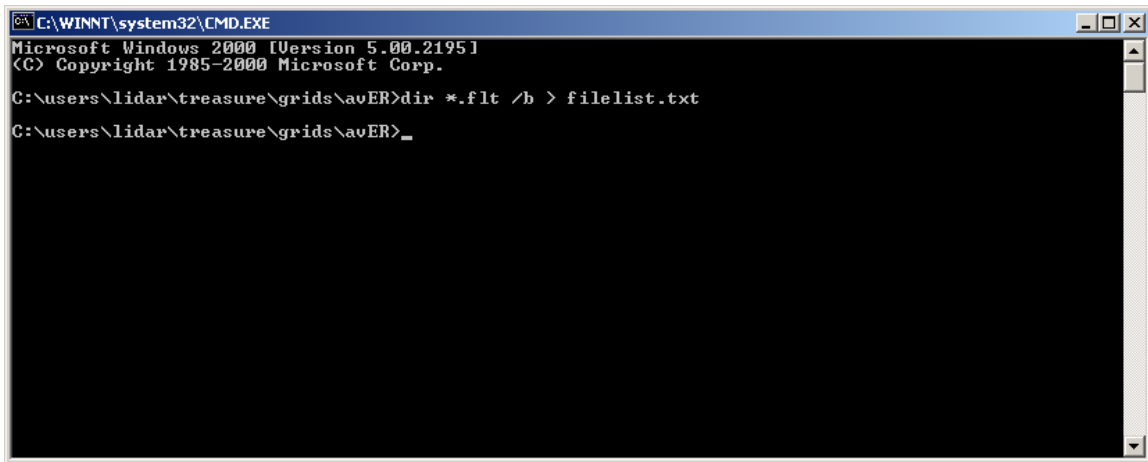
HowToConverGrid.doc

This document describes a method for converting multiple *.flt floating point grid files to ESRI Grid format.

Last revised: 5/8/06, WRV

Step 1. Create File List

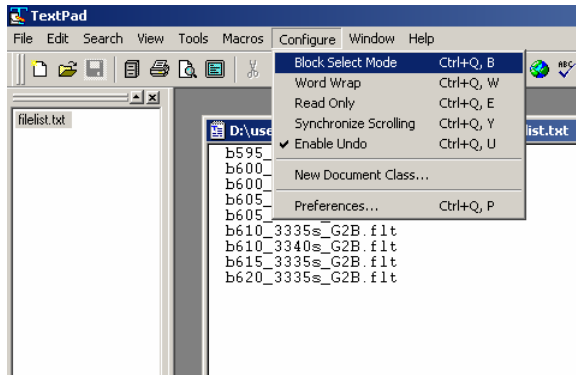
- 1) Open DOS prompt, change directories to folder containing *.flt files, of follow steps listed in howToCreateDOSprompt.pdf
- 2) Create list of file names. Type: `dir *.flt /b > filelist.txt`



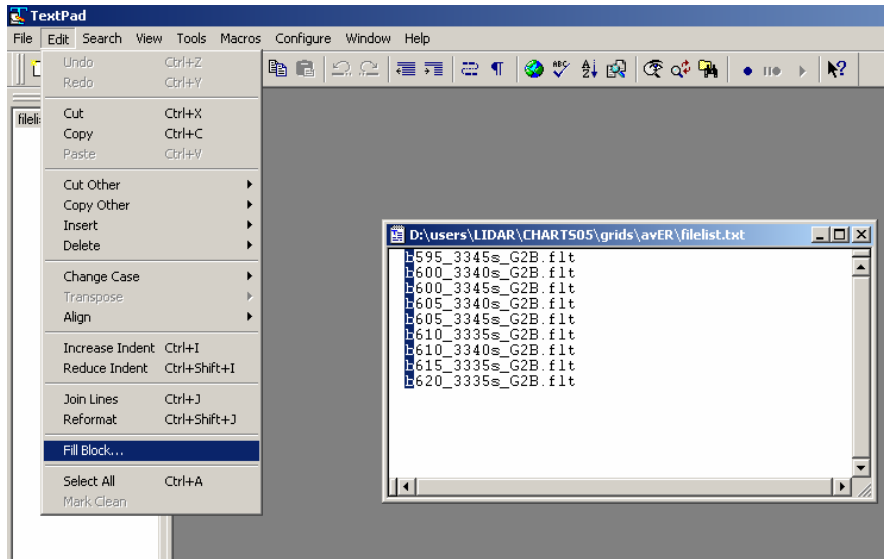
```
C:\WINNT\system32\CMD.EXE
Microsoft Windows 2000 [Version 5.00.2195]
(C) Copyright 1985-2000 Microsoft Corp.

C:\users\lidar\treasure\grids\avER>dir *.flt /b > filelist.txt
C:\users\lidar\treasure\grids\avER>_
```

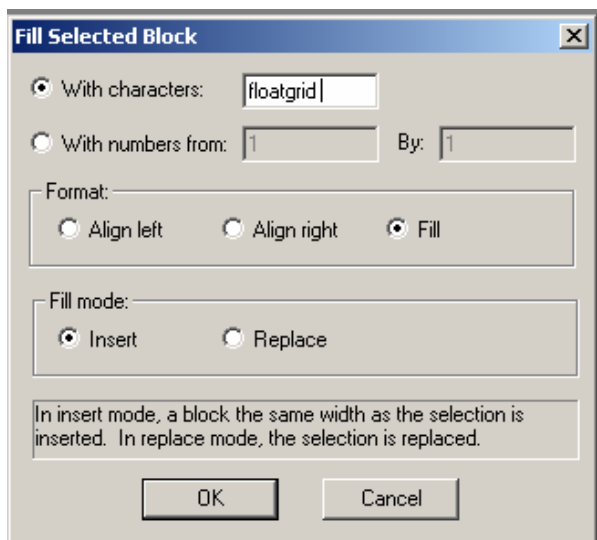
- 3) Open filelist.txt in TextPad (<http://www.textpad.com/>).
- 4) Select Configure, Block Select Mode



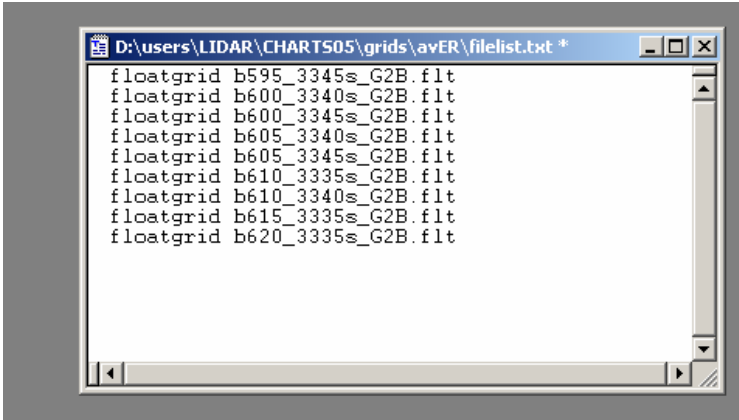
- 5) Highlight the first column of text, then select Edit, Fill Block



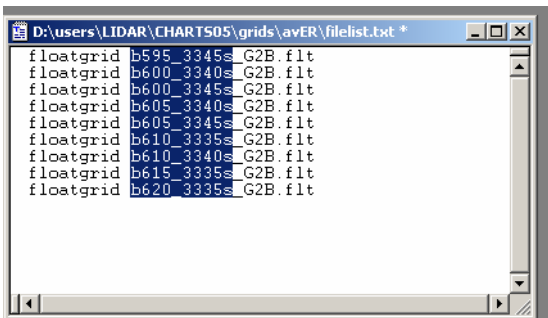
- 6) Insert floatgrid before each line. In the Fill Selected Block window, type floatgrid in the With characters: section, and make sure there is a space after floatgrid. Make sure the format Fill is selected, and Fill mode is Insert. Click OK.



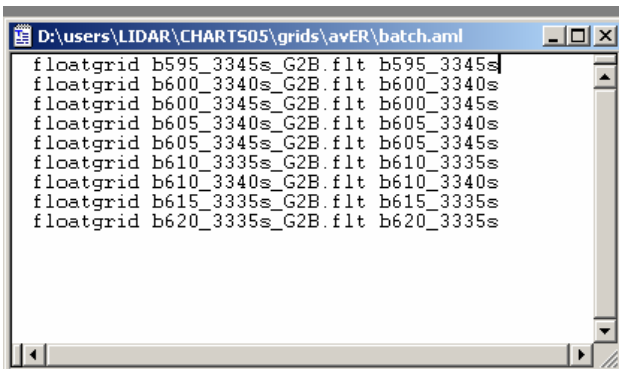
- 7) Your file should now look like this:



- 8) Insert each file name after each line, but get rid of the _G2B.flt text. Select on the text you want, and copy.



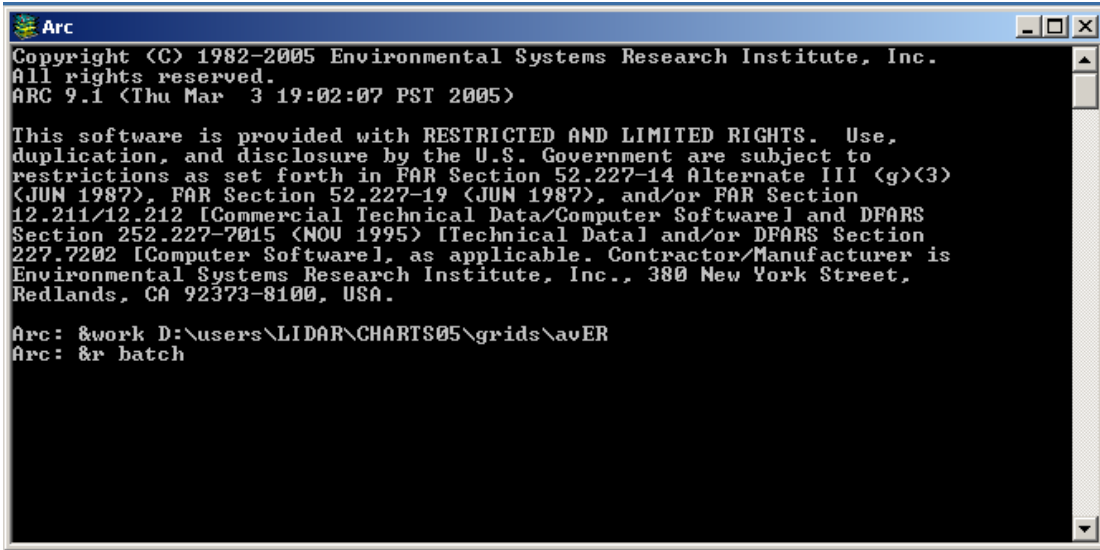
- 9) Then paste text on space beyond previous text to look like this:



- 10) Save file as *.aml. (for this example, saved as batch.aml)

Step 2. Run AML file

- 1) Open ArcInfo Workstation Arc module
- 2) Specify workspace by typing &work [path to workspace]
- 3) Run AML file by typing &r [AML file name] (for this example, &r convert)



```
Arc
Copyright (C) 1982-2005 Environmental Systems Research Institute, Inc.
All rights reserved.
ARC 9.1 (Thu Mar 3 19:02:07 PST 2005)

This software is provided with RESTRICTED AND LIMITED RIGHTS. Use,
duplication, and disclosure by the U.S. Government are subject to
restrictions as set forth in FAR Section 52.227-14 Alternate III (g)(3)
(JUN 1987), FAR Section 52.227-19 (JUN 1987), and/or FAR Section
12.211/12.212 [Commercial Technical Data/Computer Software] and DFARS
Section 252.227-7015 (NOV 1995) [Technical Data and/or DFARS Section
227.7202 [Computer Software], as applicable. Contractor/Manufacturer is
Environmental Systems Research Institute, Inc., 380 New York Street,
Redlands, CA 92373-8100, USA.

Arc: &work D:\users\LIDAR\CHARTS05\grid\avER
Arc: &r batch
```

Useful tip: Mosaic grids using ESRI's ArcToolbox Mosaic To New Raster tool, in Database Management Tools – Raster – Mosaic To New Raster. Or, follow steps in HowToMosaicGrids.doc