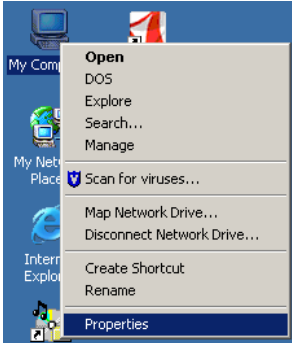
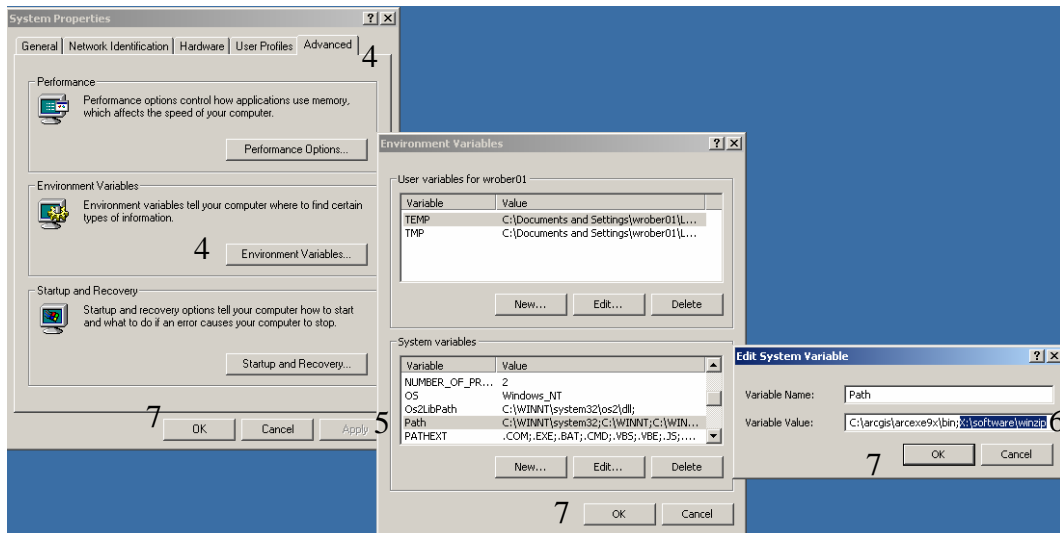


How to Set a Path to an Executable

1. Copy executable (*.exe) to a folder that will not move or be renamed
2. Copy the path to the folder that contains the executable
3. Right-click on My Computer, select Properties



4. Select the Advanced tab, click Environment Variables... (for XP, the Environment Variables... button is towards the bottom)



5. Under System variables, scroll down to Path, select, and select Edit...
6. Go to the end of Variable Value, enter a semicolon after the last input, and paste the path to the executable immediately following the semicolon
7. Click OK, OK, OK
8. Now when the executable is called, you no longer have to have the executable in the folder that you are working in